



GMT MONTHLY MEMBERSHIP PROGRESS REPORT

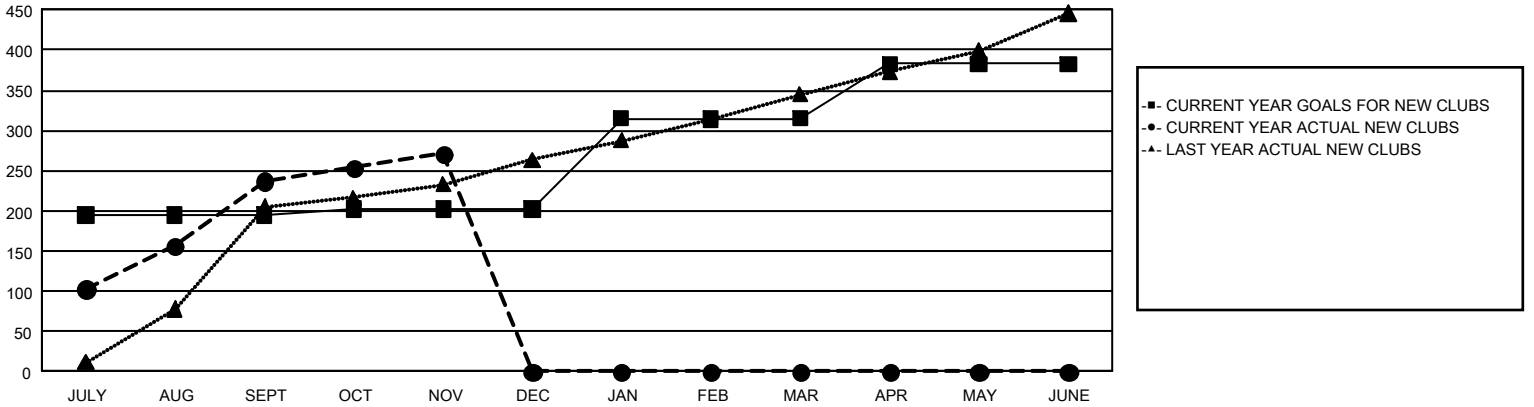
GAT Constitutional Area 6 - South Asia and Middle East

Results as of: 11/30/2024

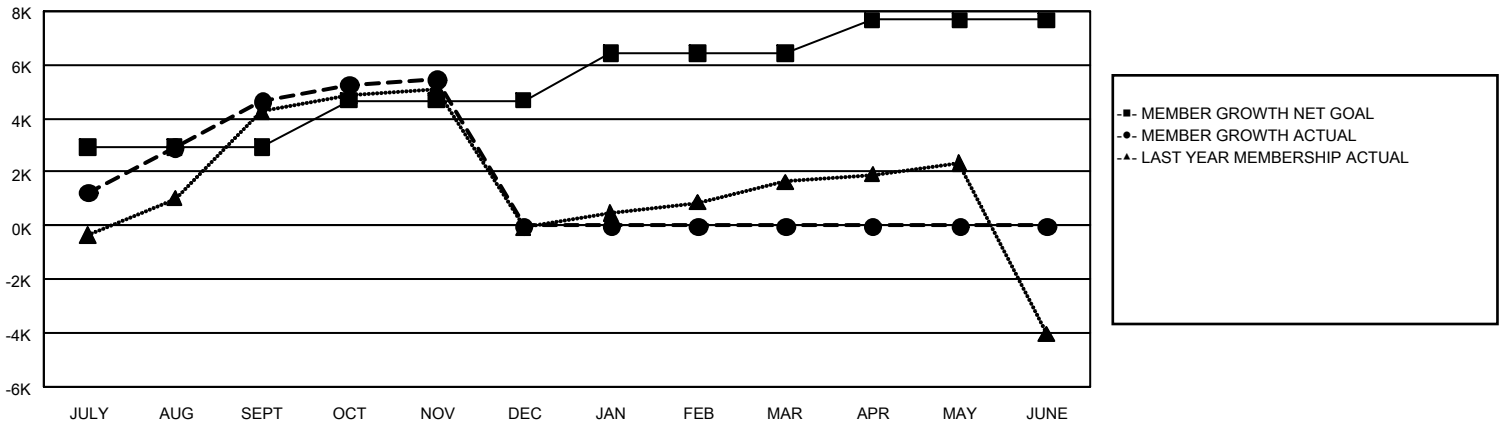
REPORT DOES NOT INCLUDE CLUBS IN UNDISTRICTED AREAS.

Clubs				Members			
RESULTS FOR 2024-2025				RESULTS FOR 2024-2025			
QUARTER	NEW CLUB GOAL	NEW CLUBS	DROPPED CLUBS	QUARTER	MEMBER GROWTH NET GOAL	MEMBER GROWTH ACTUAL	DROPPED MEMBERS ACTUAL (including transfers)
JULY/AUG/SEPT	195	237	57	JULY/AUG/SEPT	2,933	9,801	3,934
OCT/NOV/DEC	7	34	10	OCT/NOV/DEC	1,737	2,682	1,488
JAN/FEB/MAR	113	0	0	JAN/FEB/MAR	1,772	0	0
APR/MAY/JUNE	68	0	0	APR/MAY/JUNE	1,228	0	0

GOALS AND ACTUAL NEW CLUBS CUMULATIVE



GOALS AND ACTUAL MEMBERS CUMULATIVE



DROPPED CLUBS: 67	1,560 CLUBS OF 4,096 ADDED 1 OR MORE NEW MEMBERS	GENDER DISTRIBUTION
		MALE 68,510 (71.72%)
		FEMALE 26,967 (28.23%)
DROPPED MEMBERS	CLICK HERE FOR CUMULATIVE MEMBERSHIP DATA	TOTAL FAMILY UNIT MEMBERS 0
DECEASED 41		FAMILY MEMBERS PAYING HALF DUES 0
CLUB CANCELLED 937		
OTHER 4,403		
TOTAL 5,381		